

CONJUNTO URBANO JARDIM EDITE

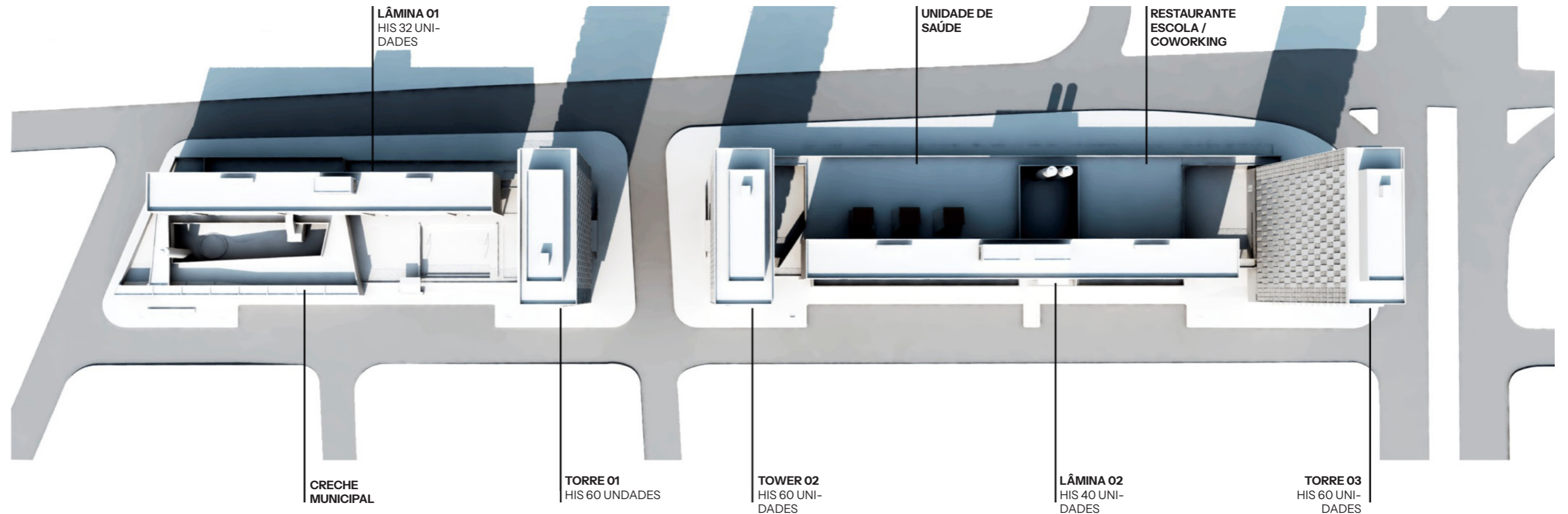
São Paulo, SP | 2008-2013

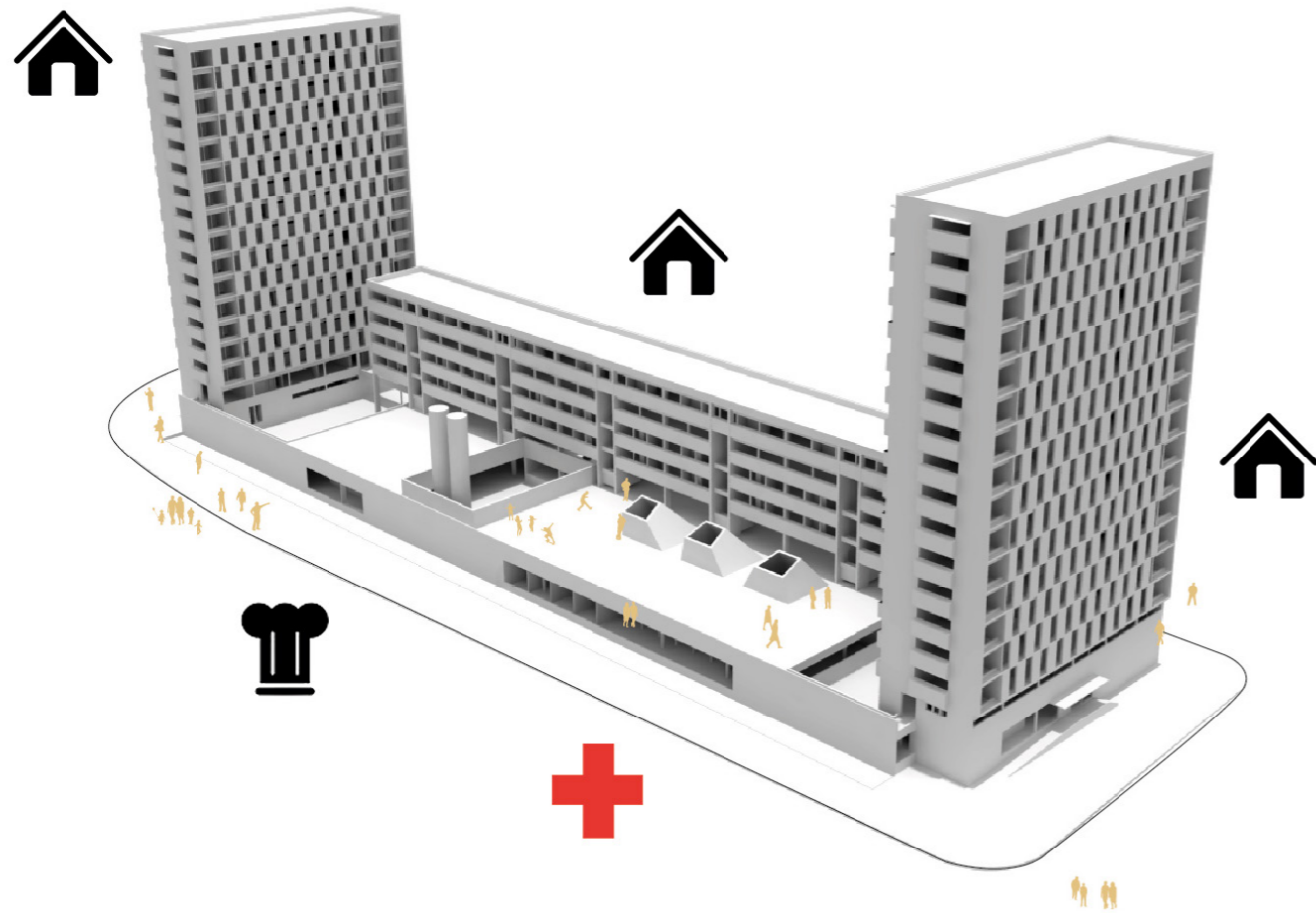
com MMBB Arquitetos



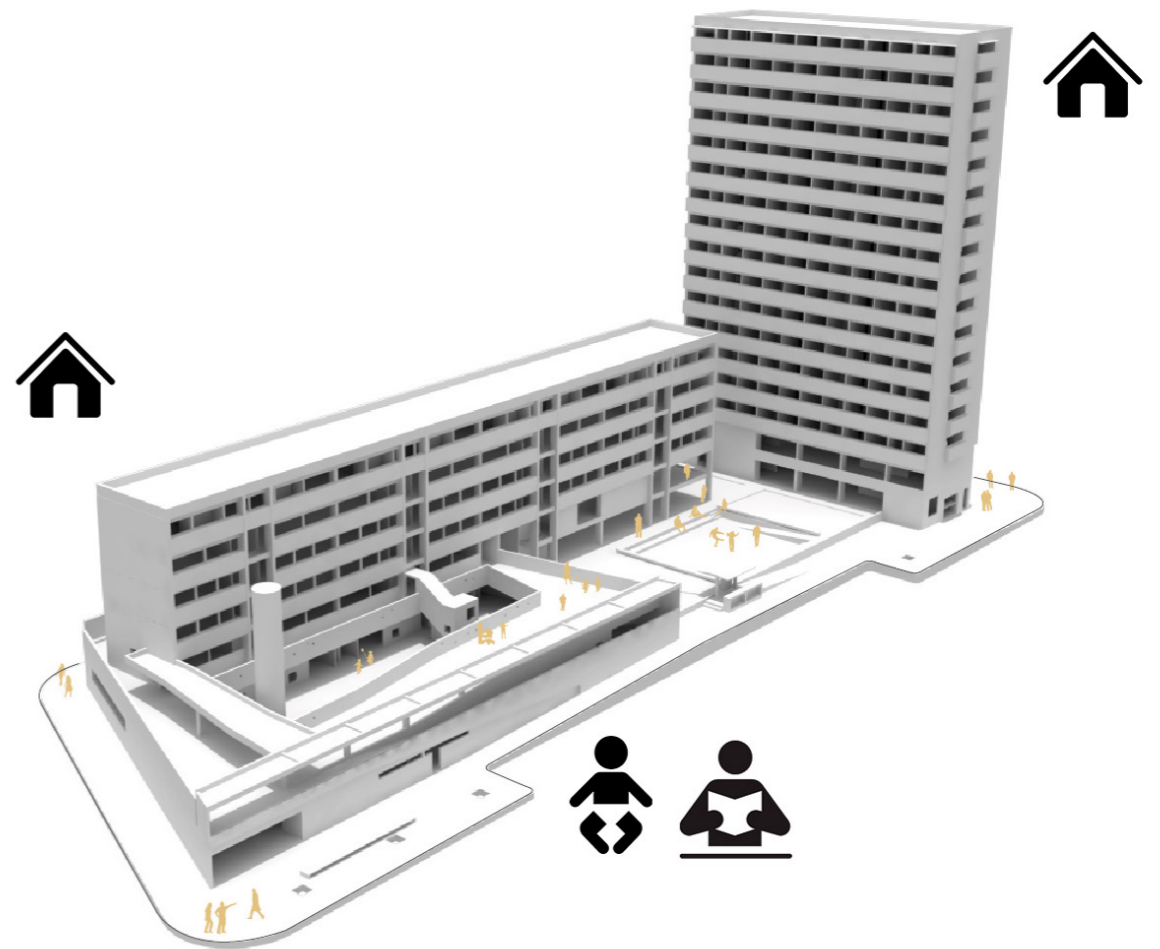


foto: Nelson Kon

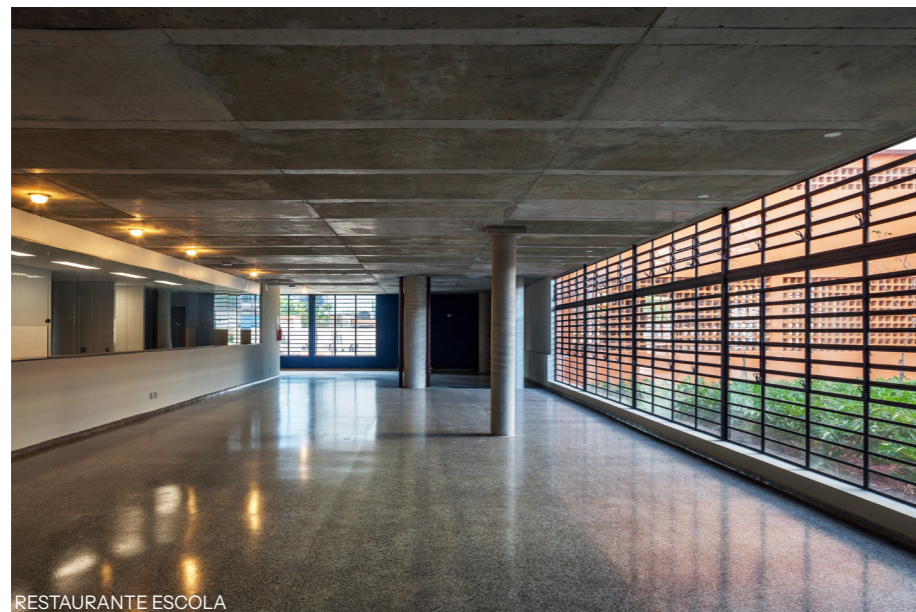




QUADRA 01 - USOS



QUADRA 02 - USOS



RESTAURANTE ESCOLA

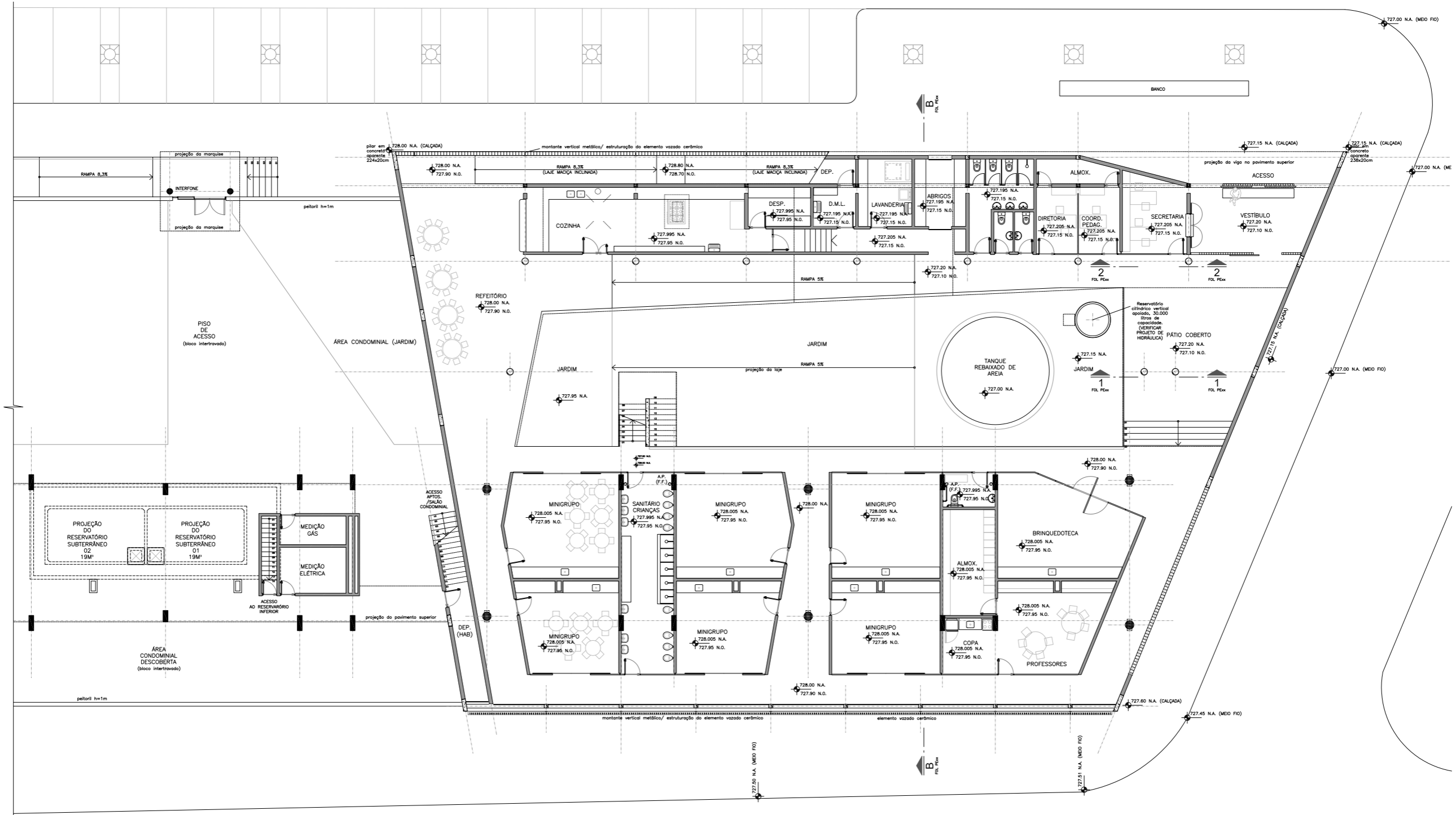


UNIDADE DE SAÚDE

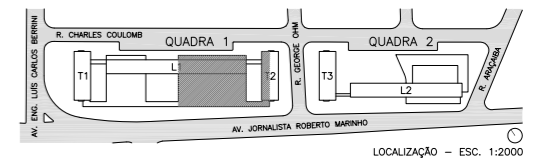


CRECHE

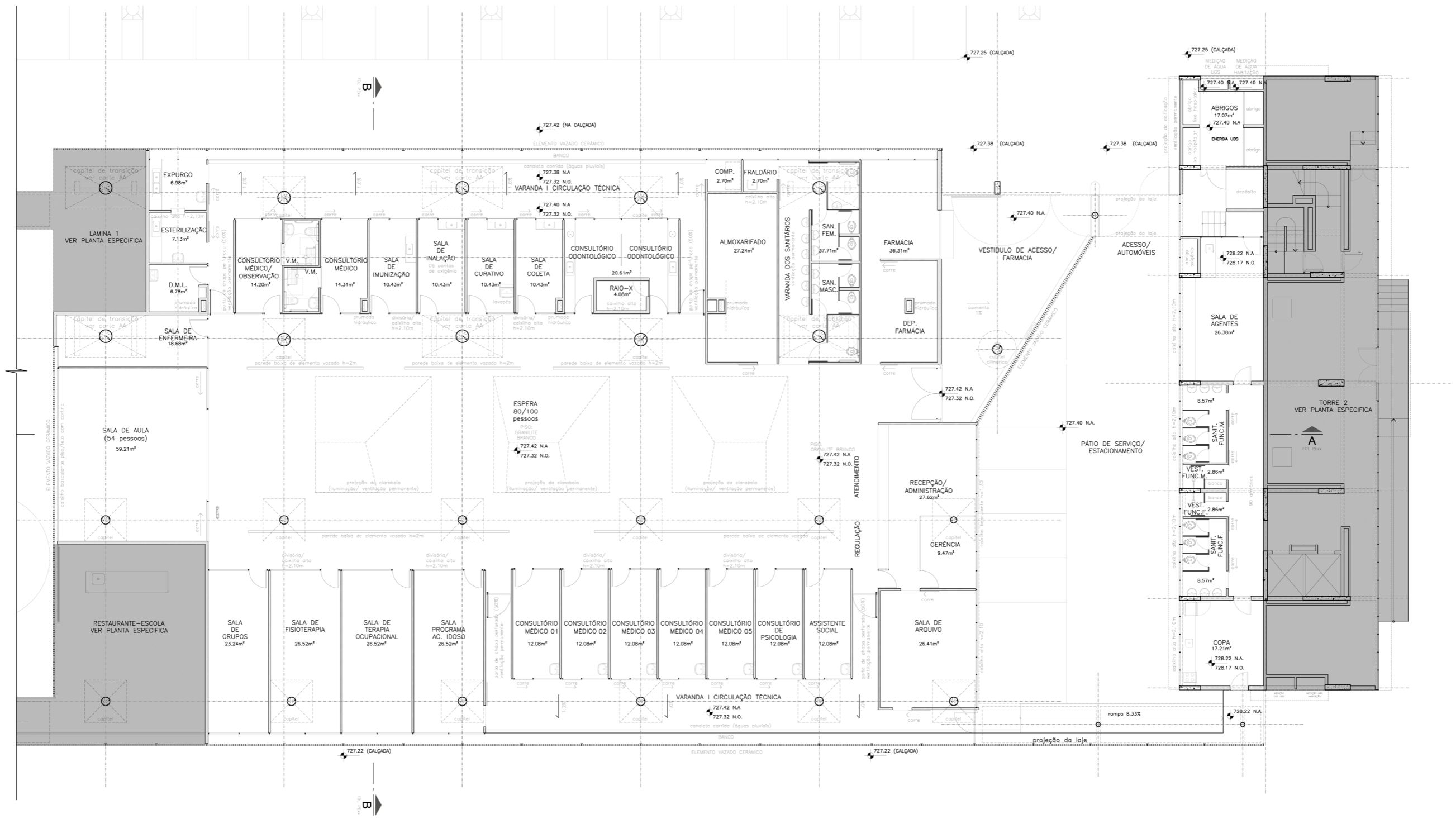
fotos: Nelson Kon



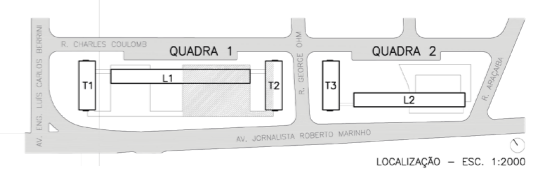
CRECHE - PAV TÉRREO



LOCALIZAÇÃO - ESC. 1:2000

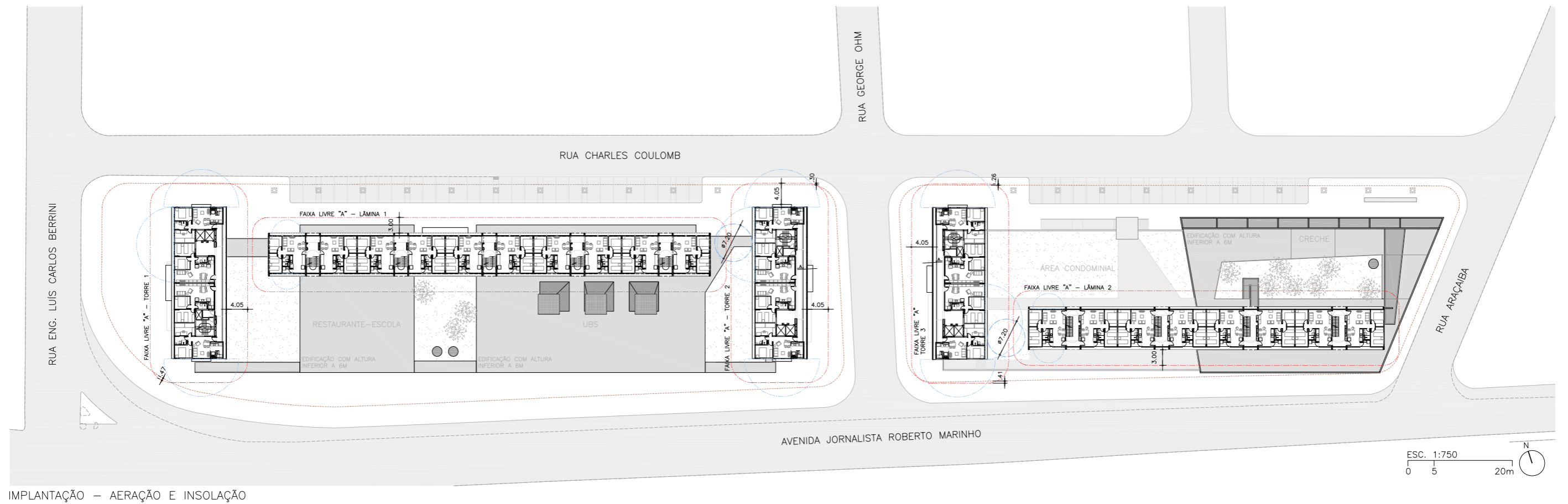


UBS - PAV TÉRREO





fotos: Nelson Kon

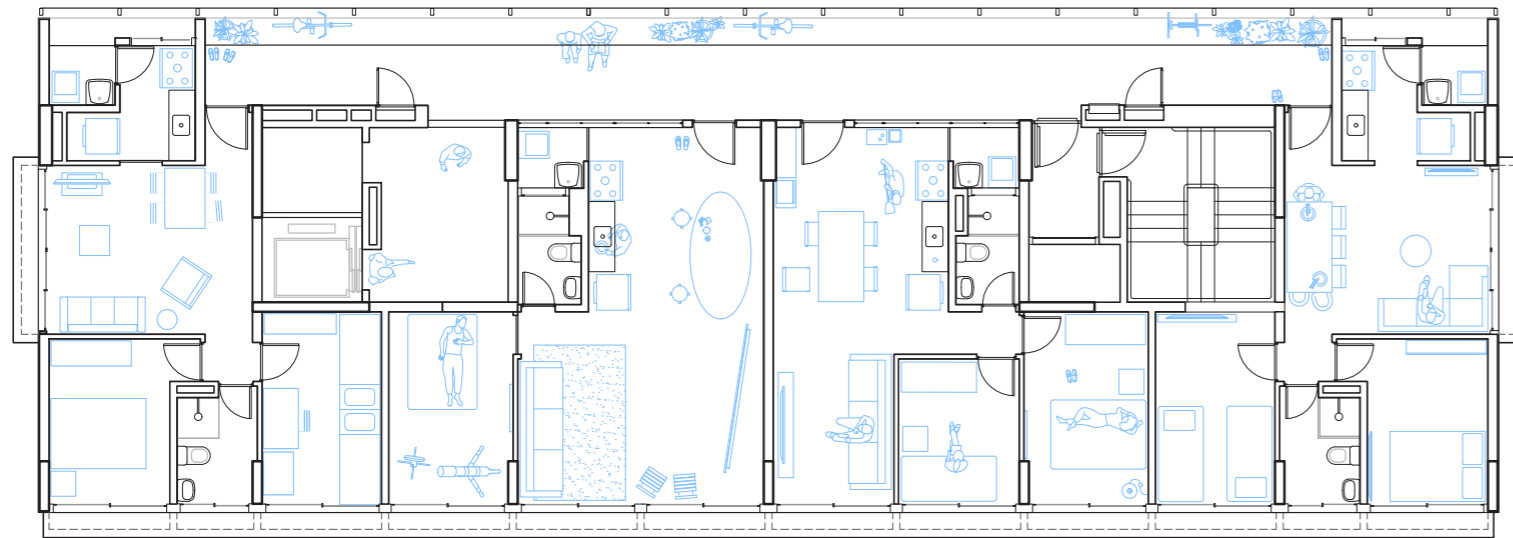


IMPLANTAÇÃO - AERAÇÃO E INSOLAÇÃO

PMSP I SEHAB - HABITAÇÃO DE INTERESSE SOCIAL JARDIM EDITE
 MMBB | H+F ARQUITETOS

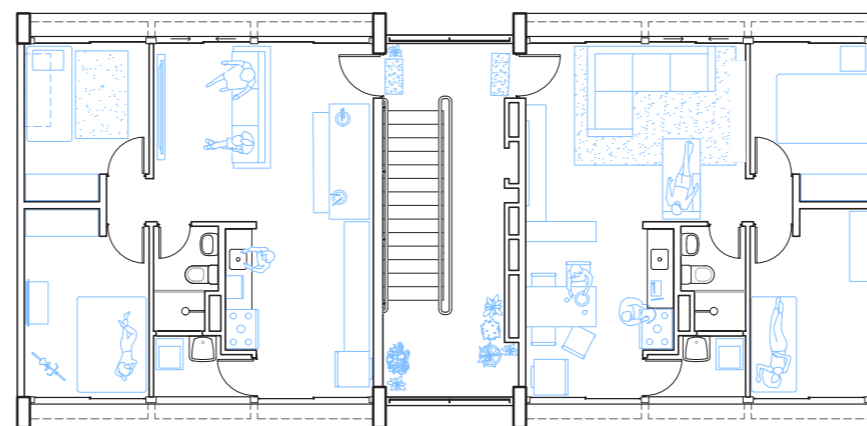
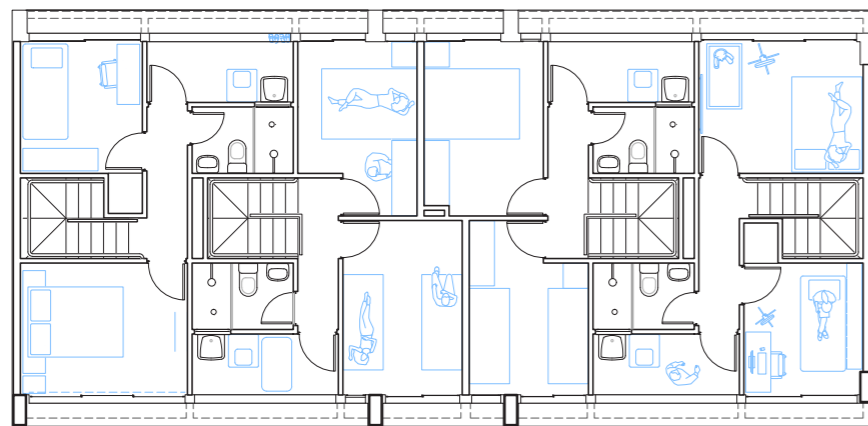


fotos: H+F



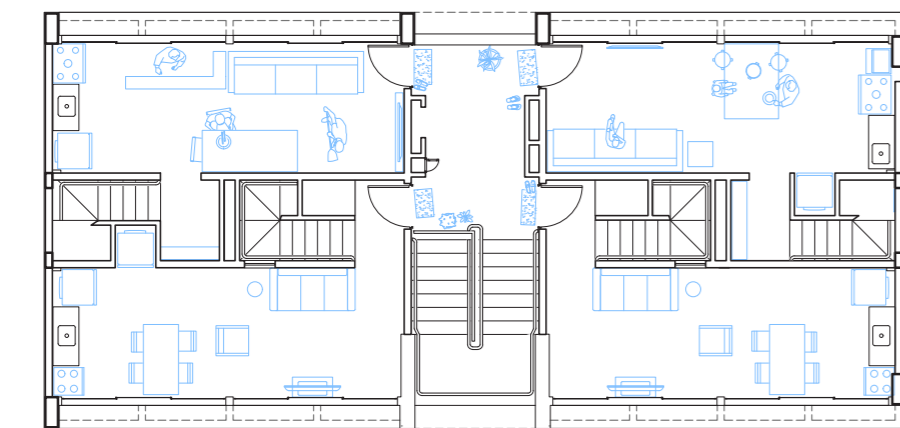
TORRE - PLANTA TIPO
exemplos da ocupação real

0 1 2 5m



LÂMINA - UNIDADES TIPO
exemplos da ocupação real

0 1 2 5m



LÂMINA - UNIDADES DUPLEX
exemplos da ocupação real

0 1 2 5m

fotos: H+F