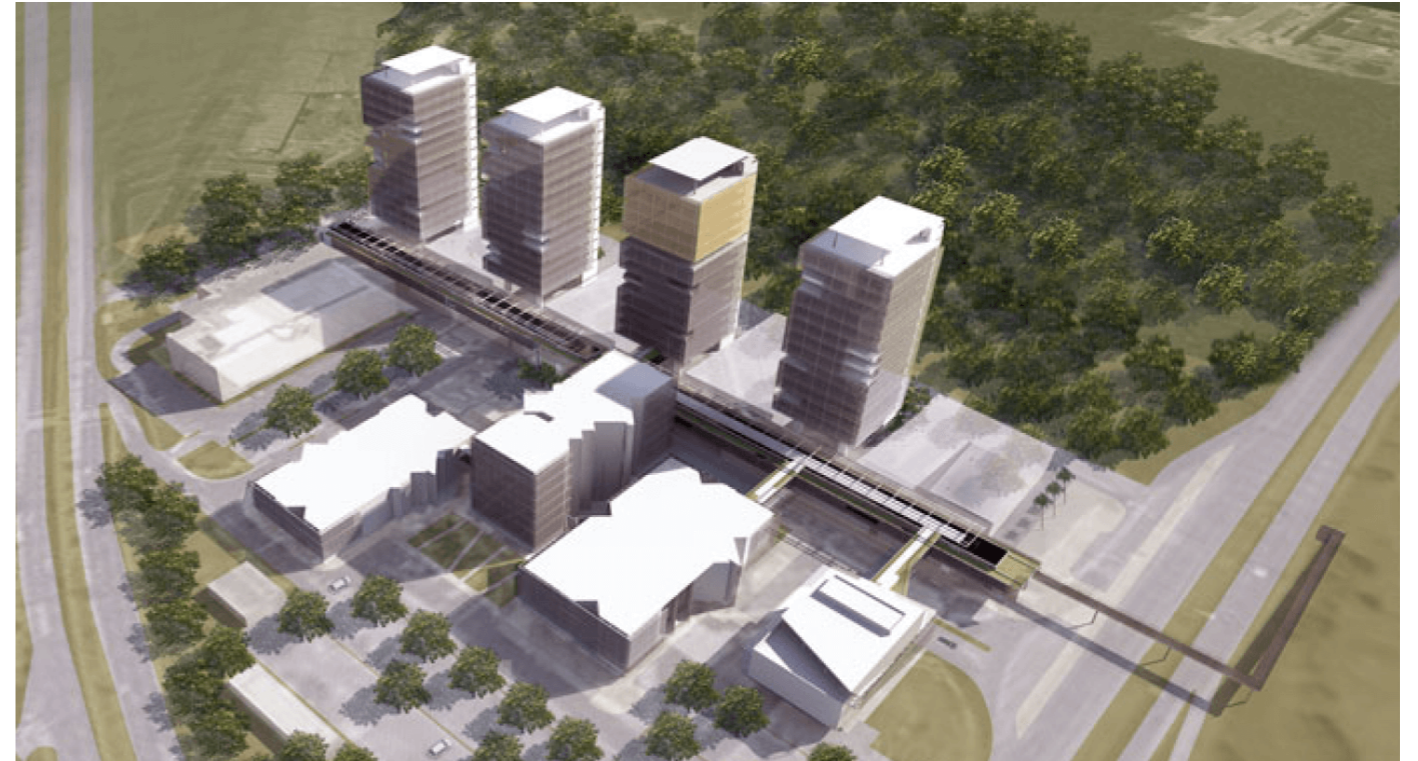


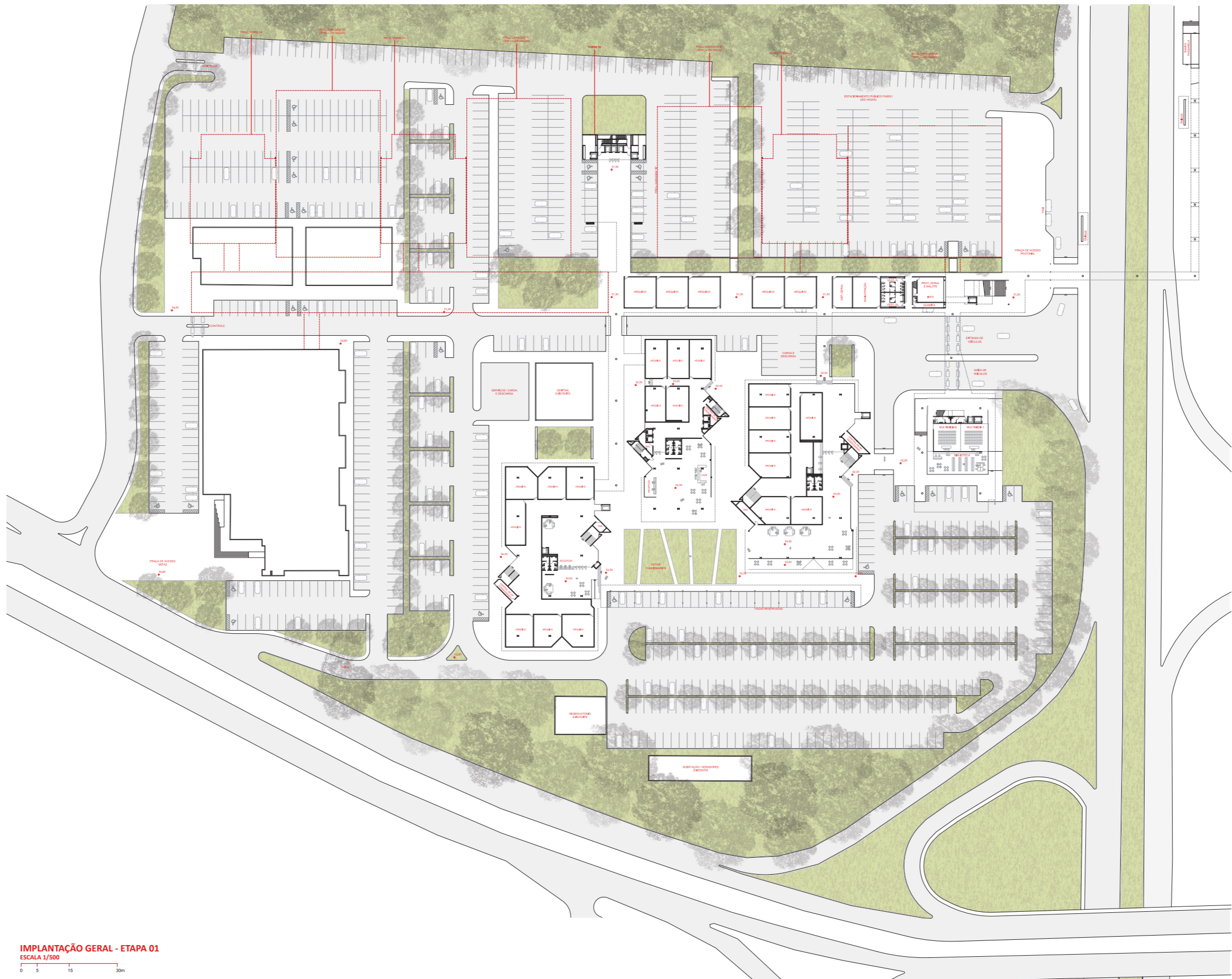
# CENTRO ADMINISTRATIVO DO MARANHÃO

São Luís, MA | 2013

Concurso Nacional Novo Centro Administrativo do Maranhão - Premiado em 2º Lugar



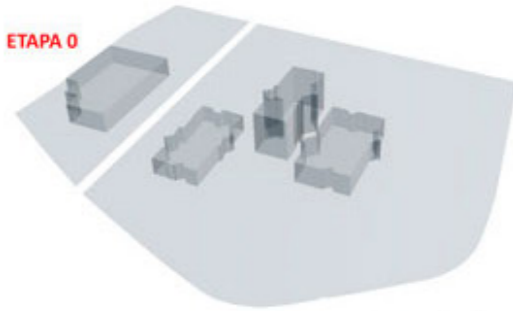




IMPLANTAÇÃO GERAL - ETAPA 01  
 ESCALA 1/500  
 0 5 15 30m

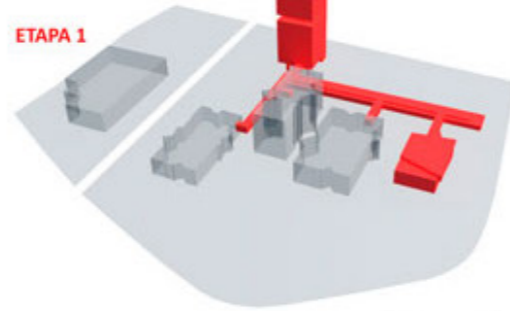
ÁREA DO TERRENO: 65.681,00 m<sup>2</sup>  
 C.A. : 1,50 (máx. 98.521,00m<sup>2</sup>)  
 T.O. : 0,30 (máx. 19.704,00m<sup>2</sup>)

ETAPA 0



(C.A. = 0,48)  
(T.O. = 0,12)

ETAPA 1



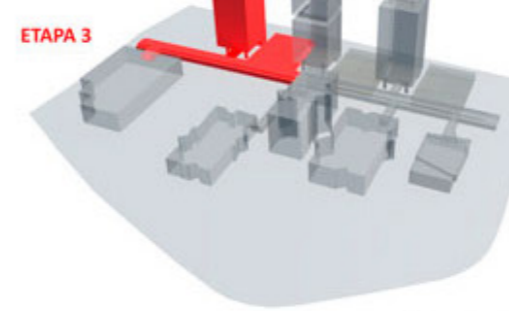
(C.A. = 0,69)  
(T.O. = 0,16)

ETAPA 2



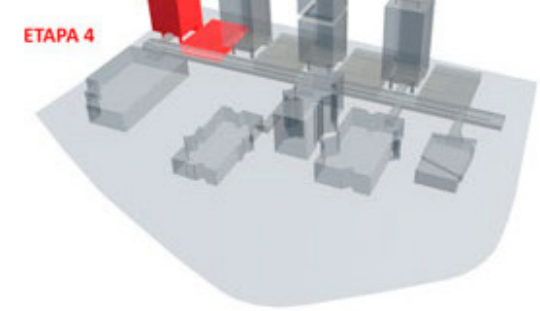
(C.A. = 1,00)  
(T.O. = 0,21)

ETAPA 3



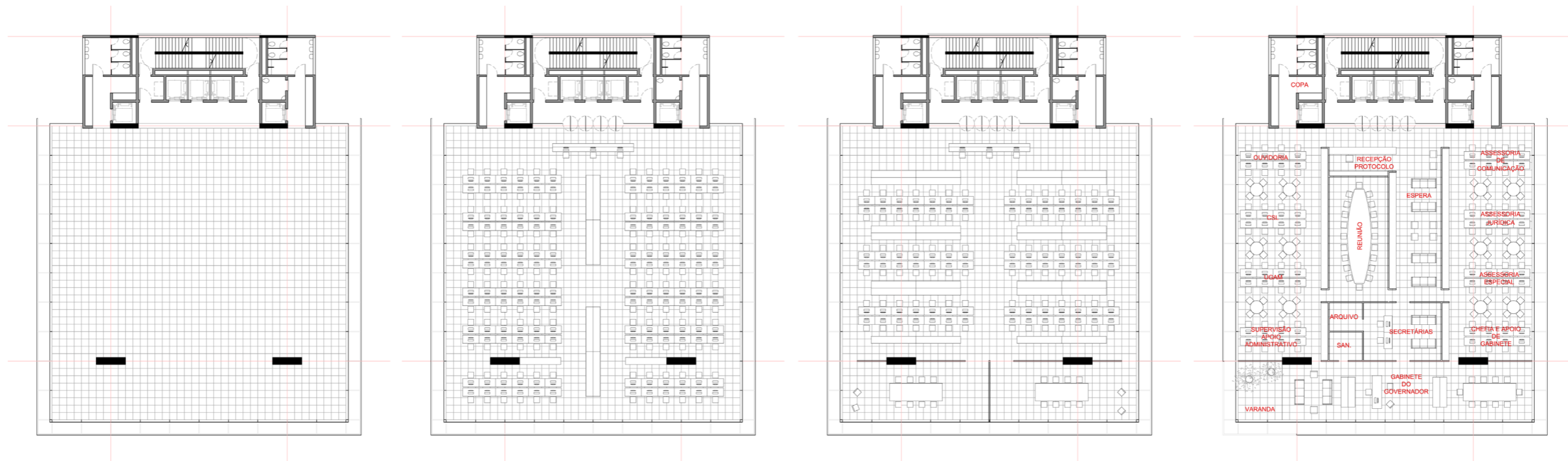
(C.A. = 1,28)  
(T.O. = 0,26)

ETAPA 4



(C.A. = 1,50)  
(T.O. = 0,30)

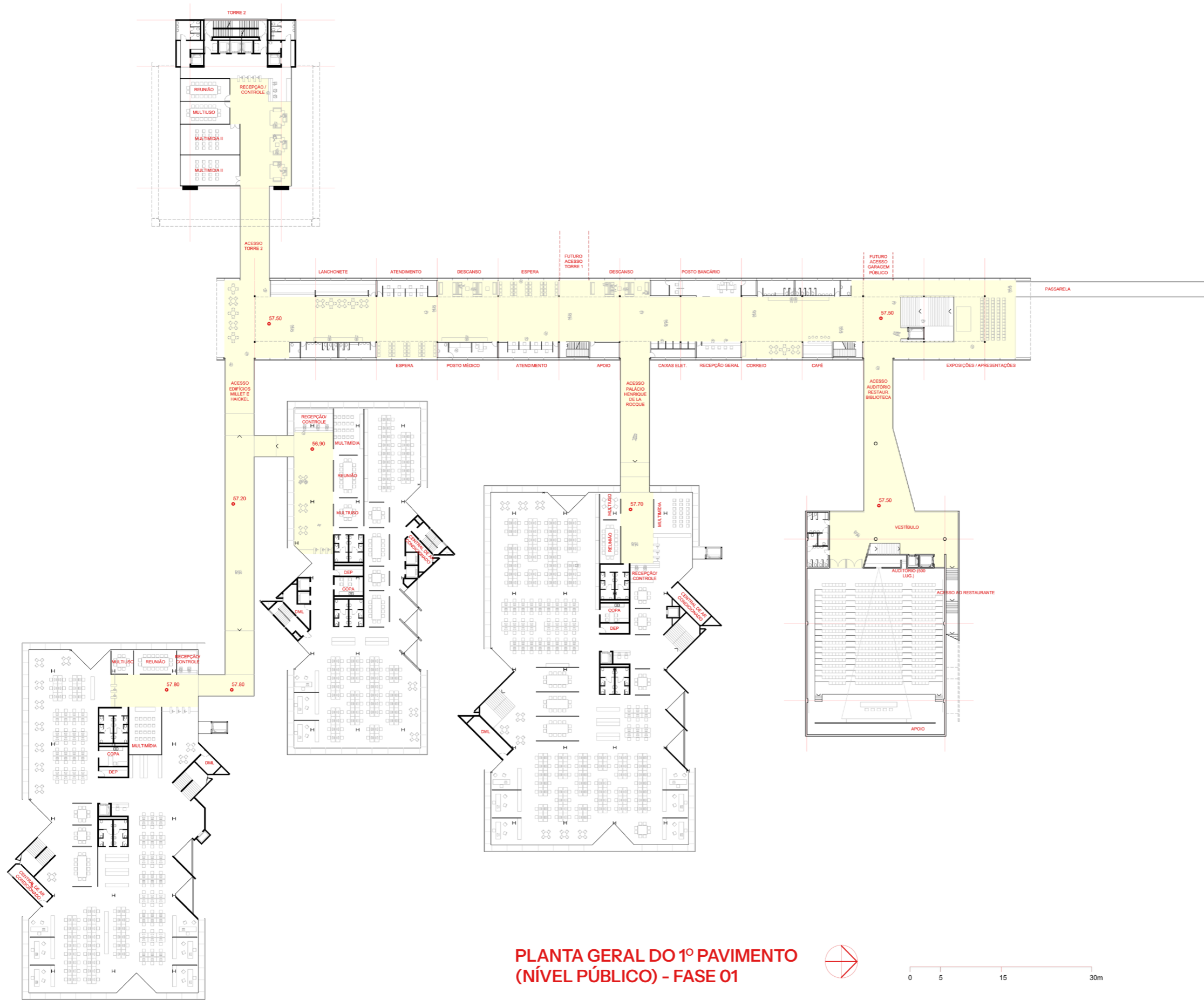
ETAPAS DE IMPLANTAÇÃO



TORRE - POSSIBILIDADES DO PAVIMENTO TIPO  
 ESCALA 1/250

0 1 5 15m

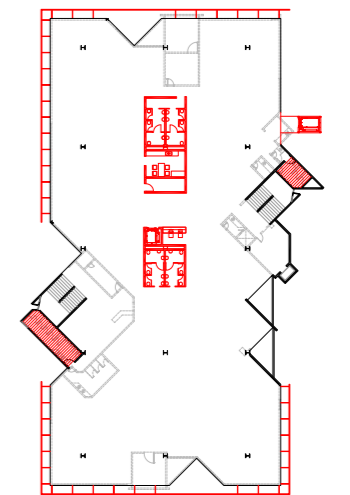
\*planta da direita: Governadoria



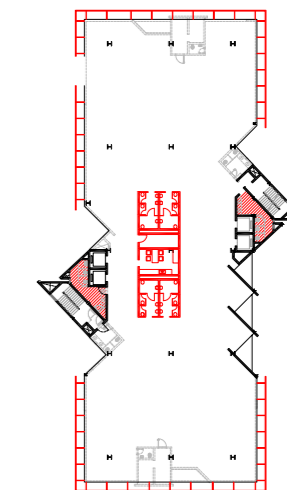
**PLANTA GERAL DO 1º PAVIMENTO  
(NÍVEL PÚBLICO) - FASE 01**



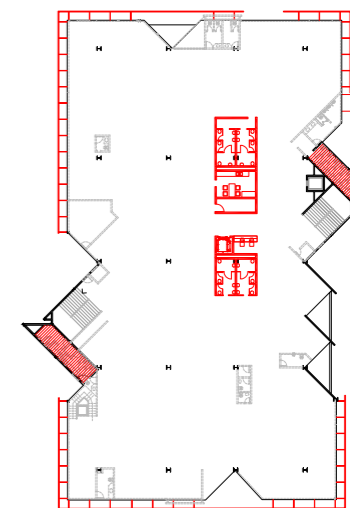
0 5 15 30m



**E3**



**E2**

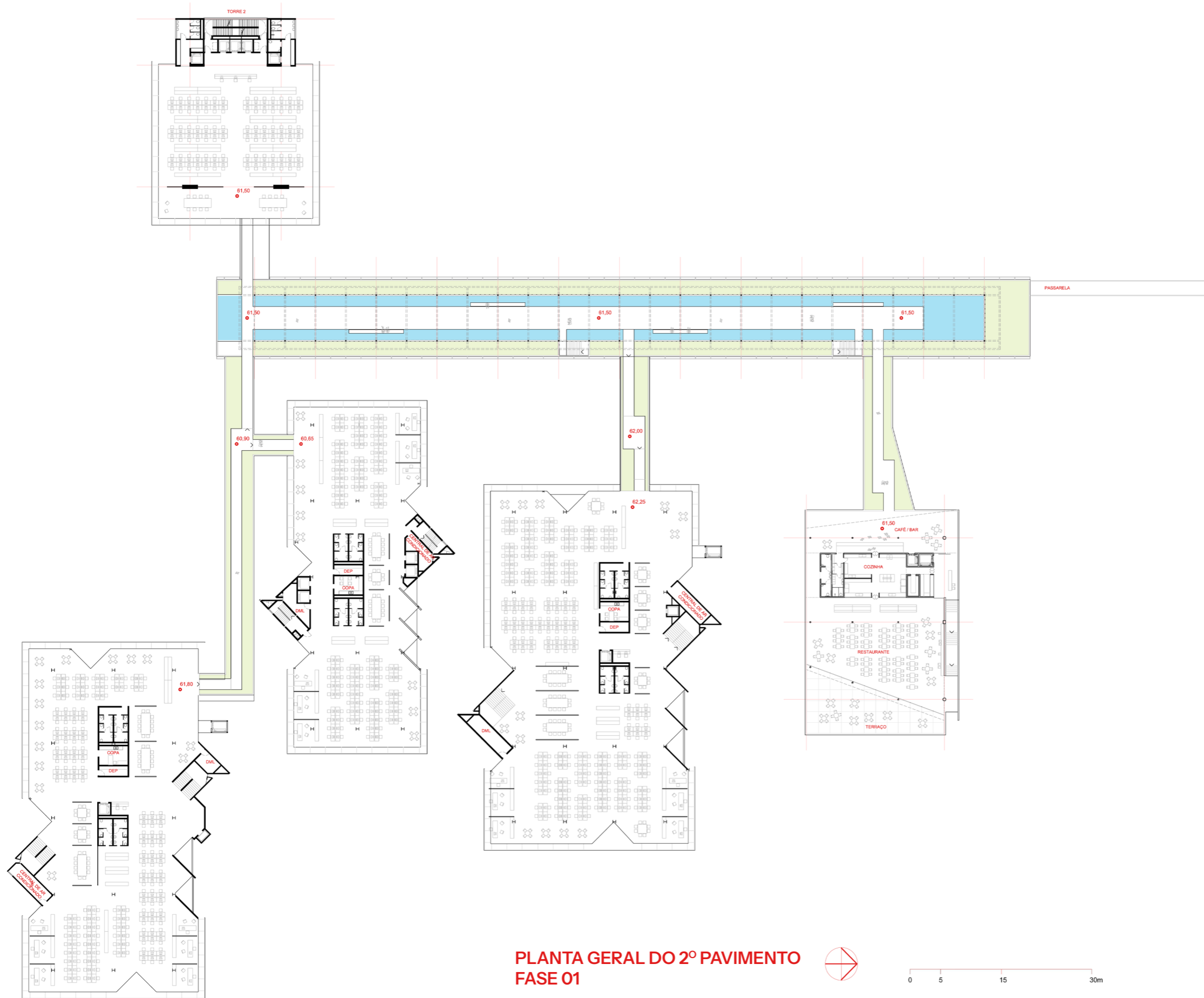


**E1**

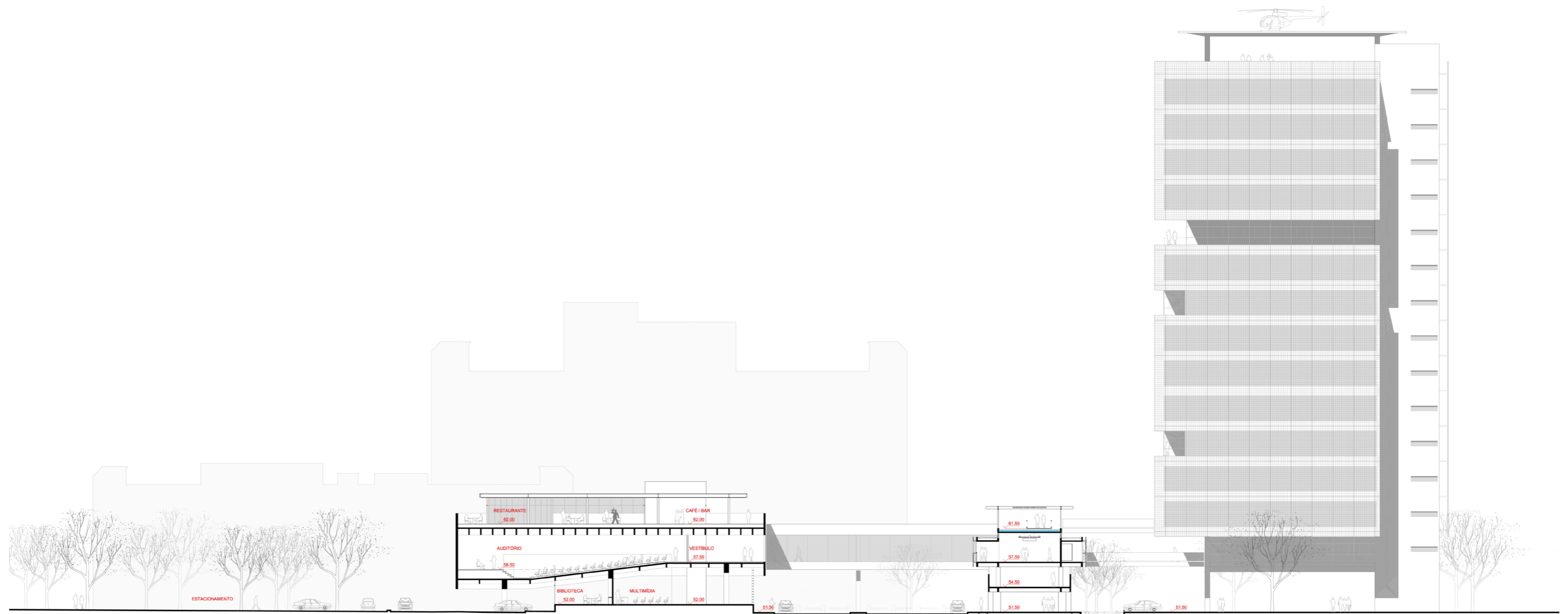
**E3/E2/E1 - ESQUEMA DAS  
INTERVENÇÕES PROPOSTAS\***

0 5 15 30m

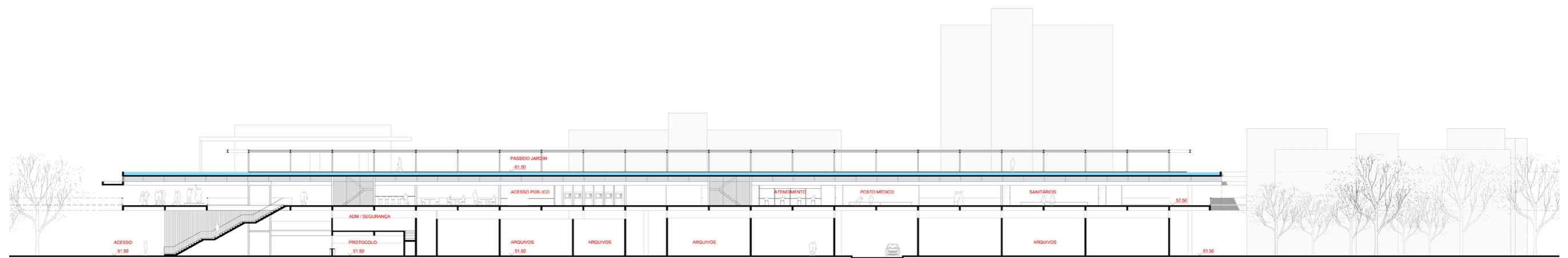
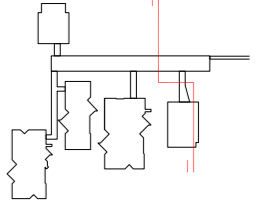
\*em vermelho os elementos adicionados / em cinza claro as demolições



**PLANTA GERAL DO 2º PAVIMENTO  
FASE 01**



**CORTE TRANSVERSAL**  
 ESCALA 1/250



**CORTE LONGITUDINAL**  
 ESCALA 1/250

