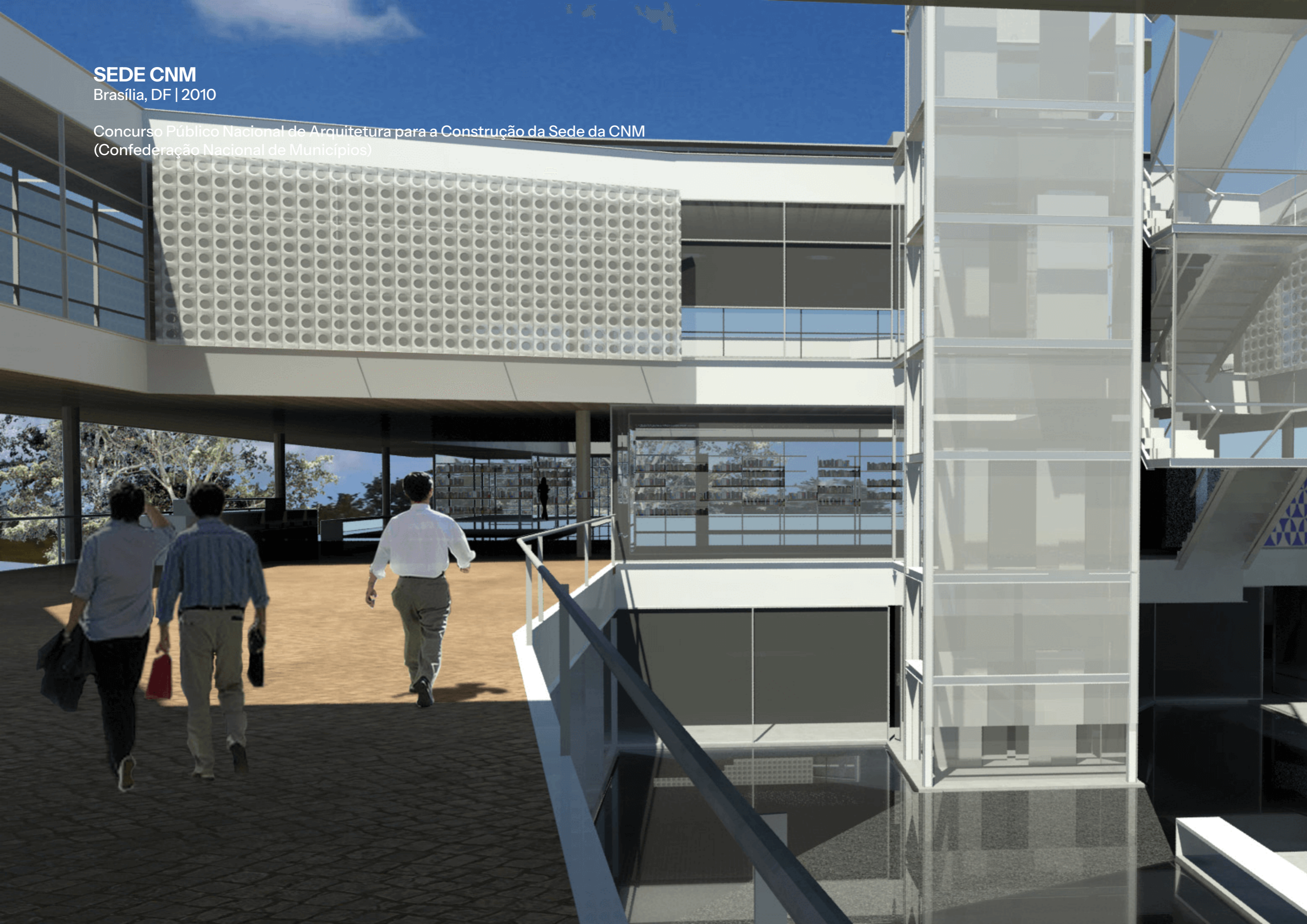
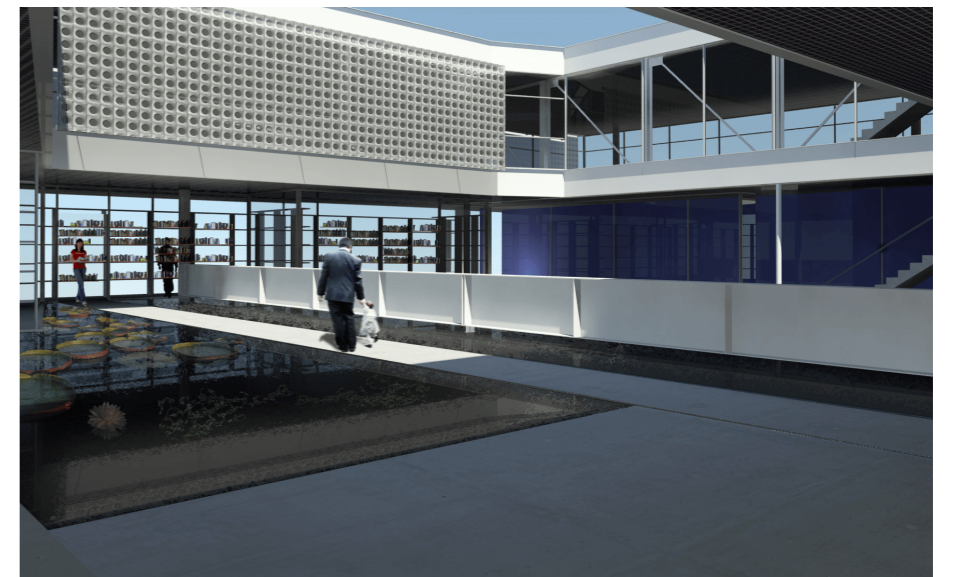
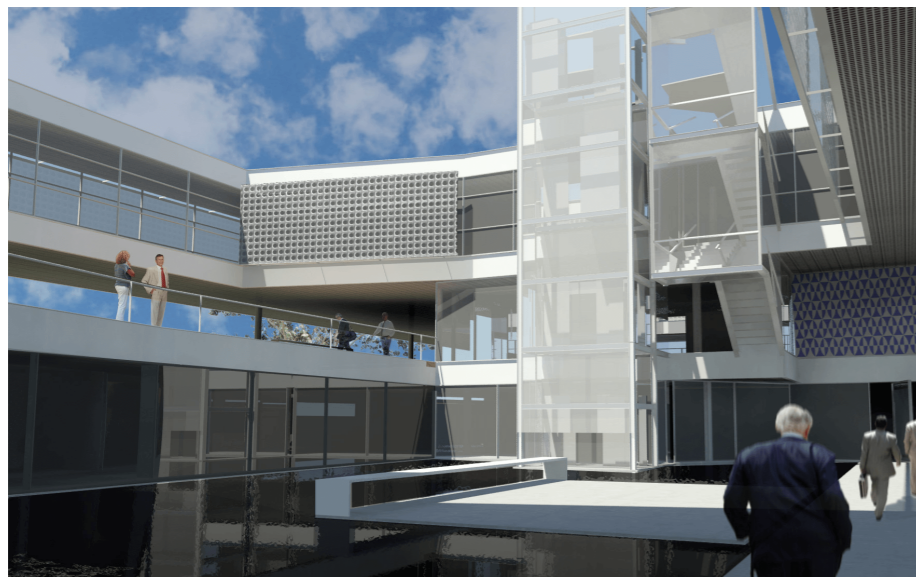
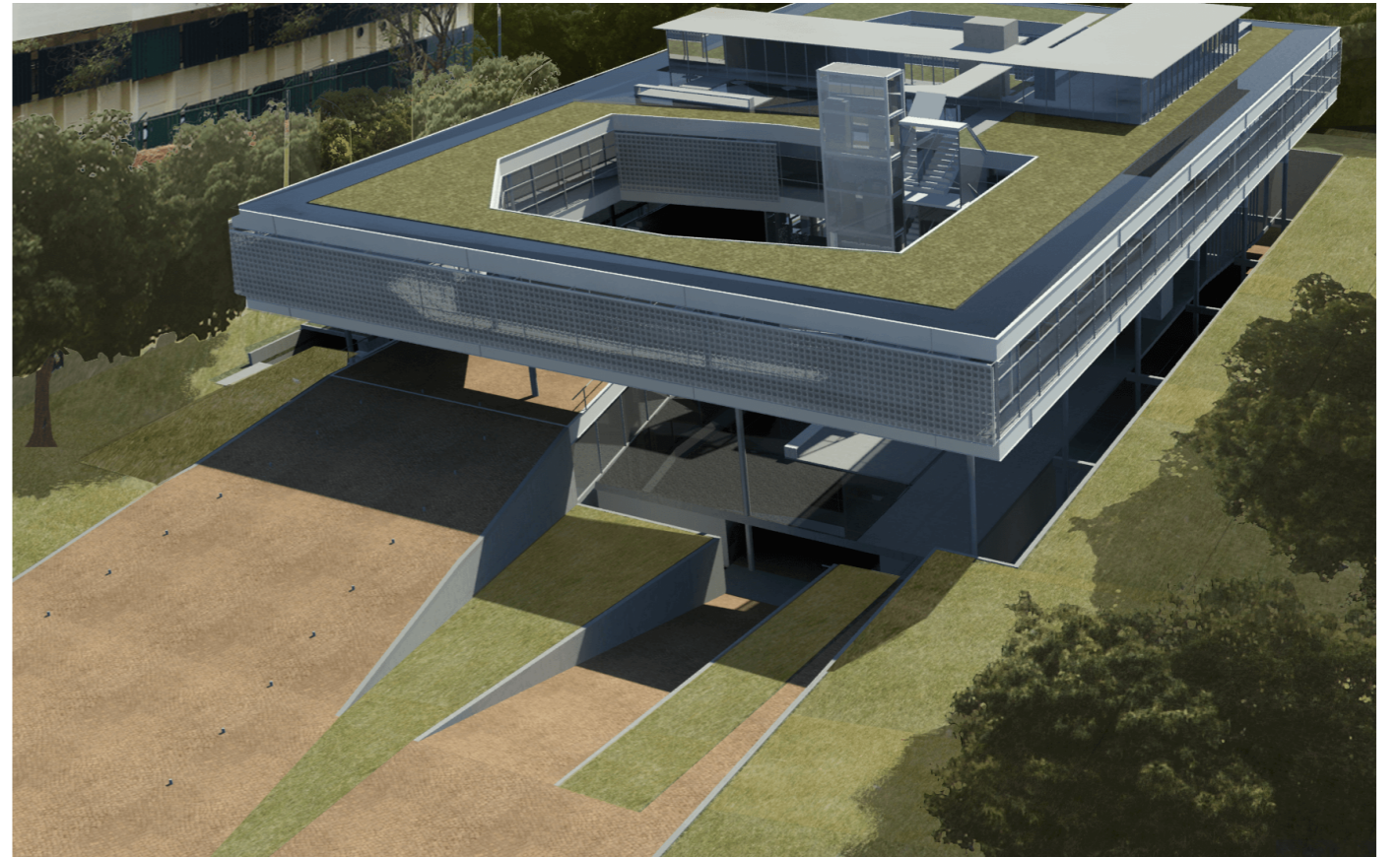
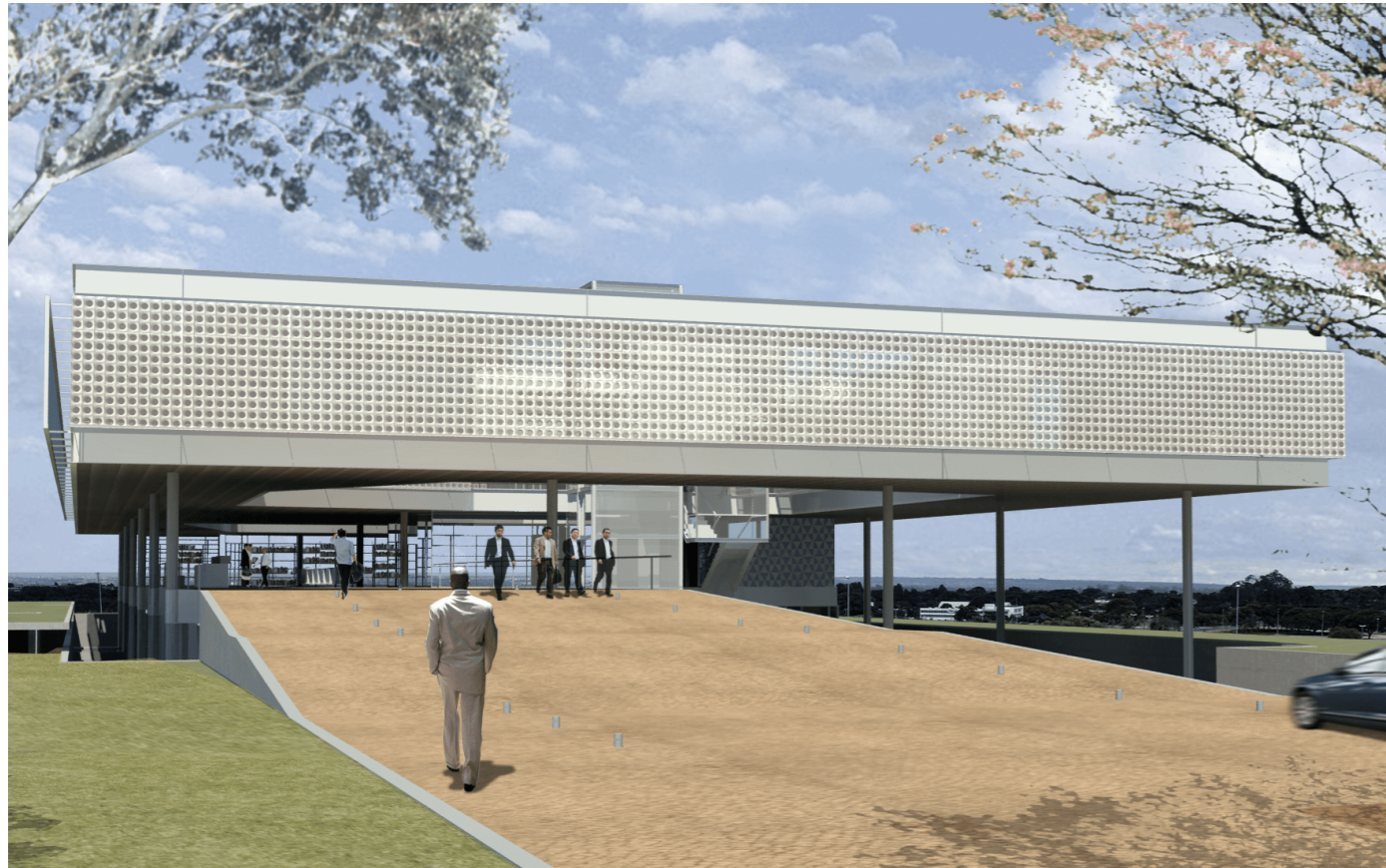


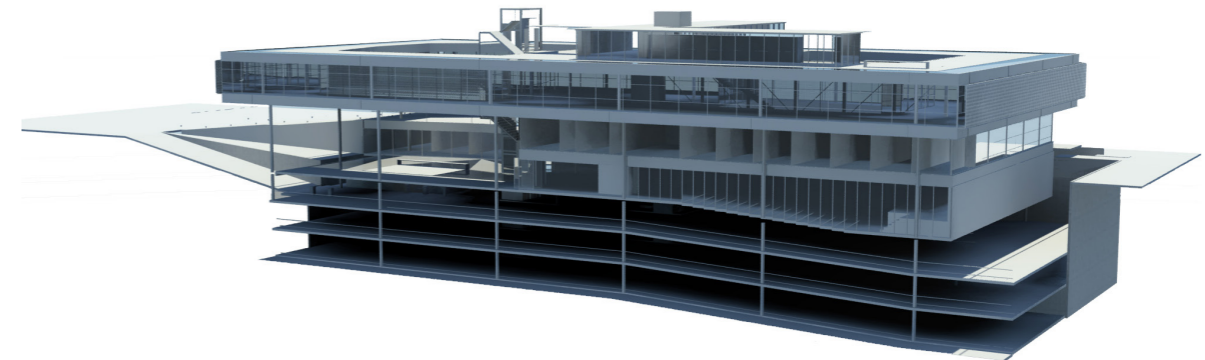
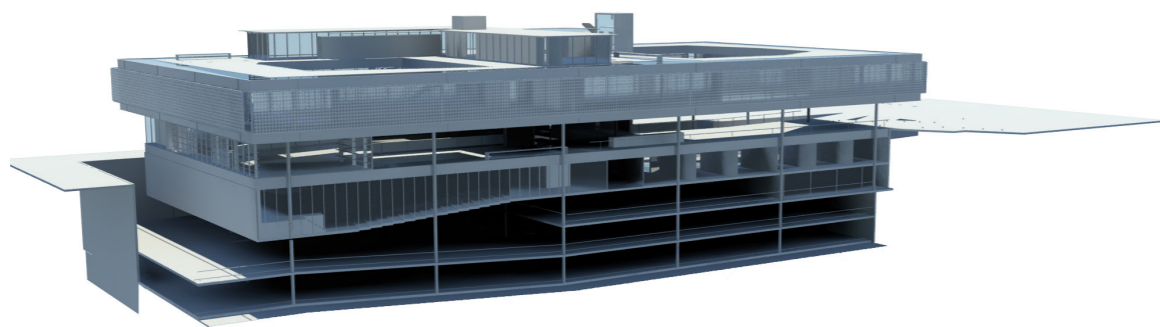
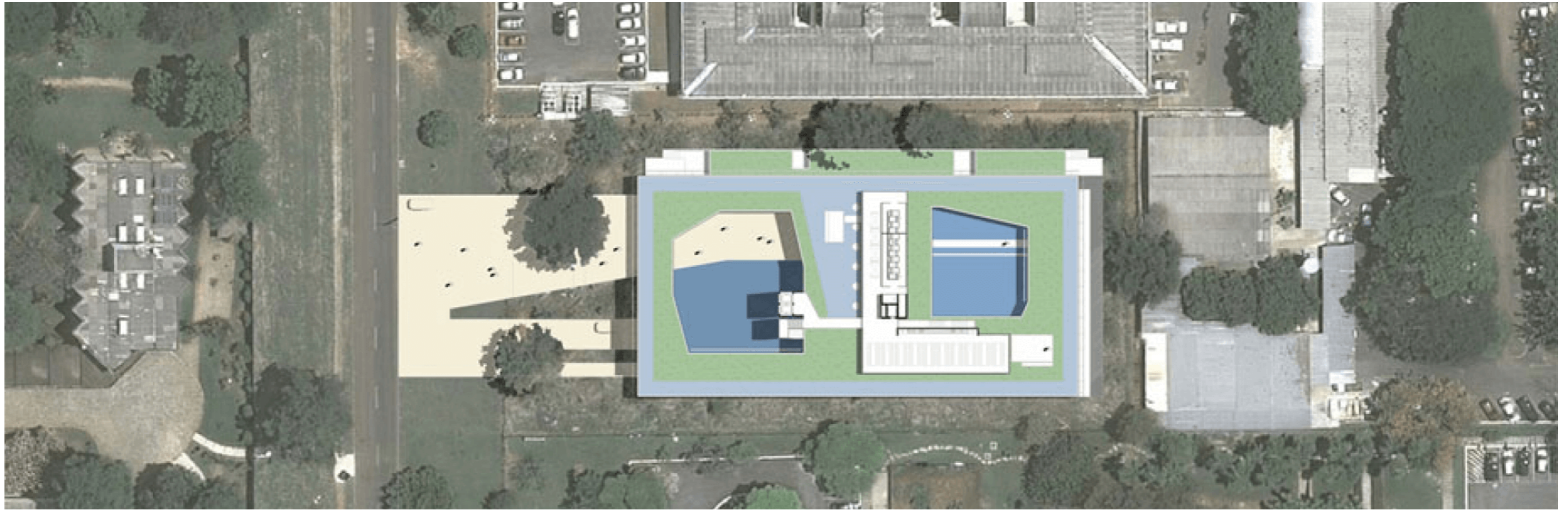
SEDE CNM

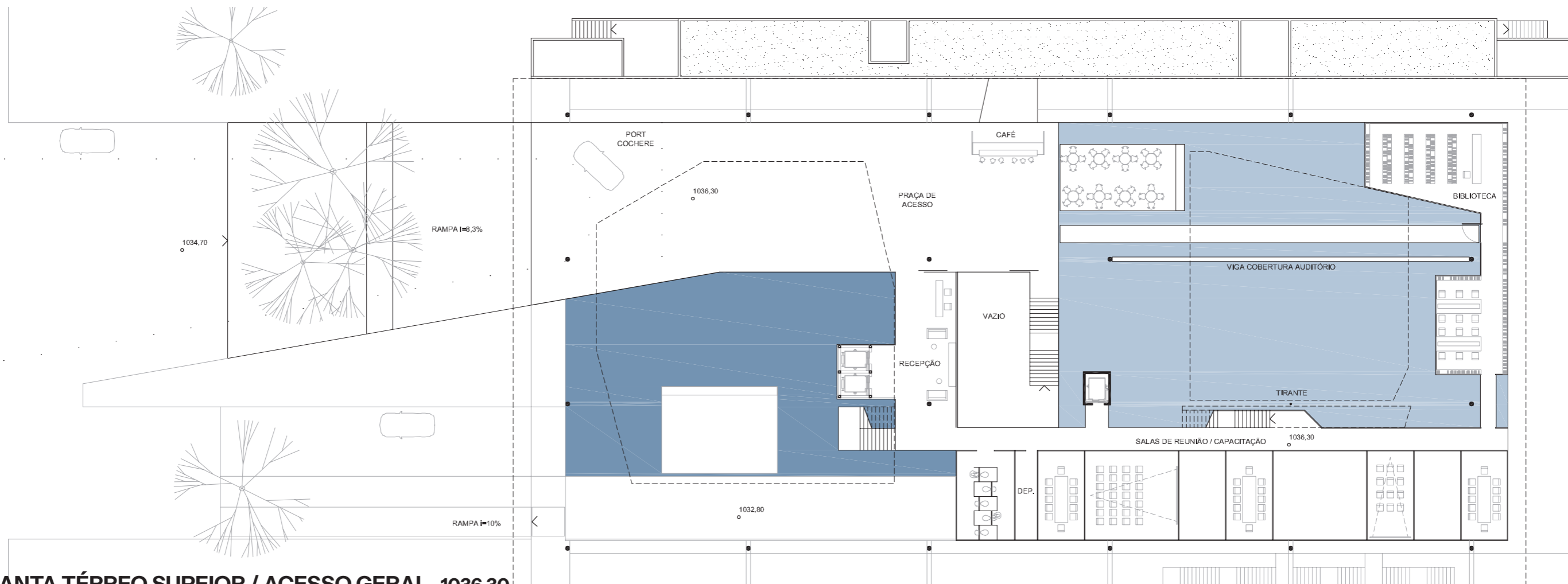
Brasília, DF | 2010

Concurso Público Nacional de Arquitetura para a Construção da Sede da CNM
(Confederação Nacional de Municípios)

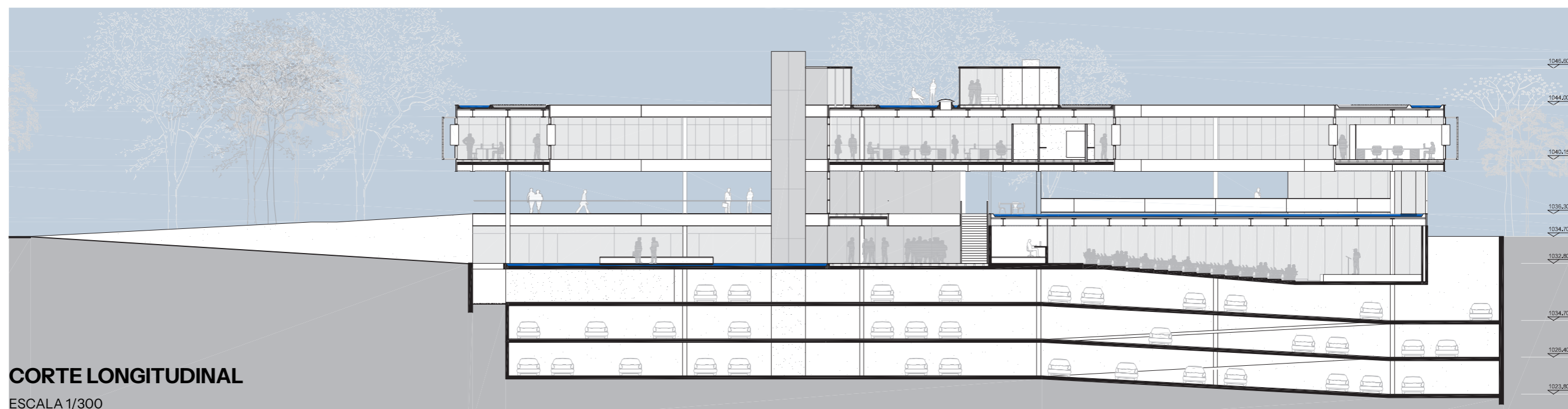




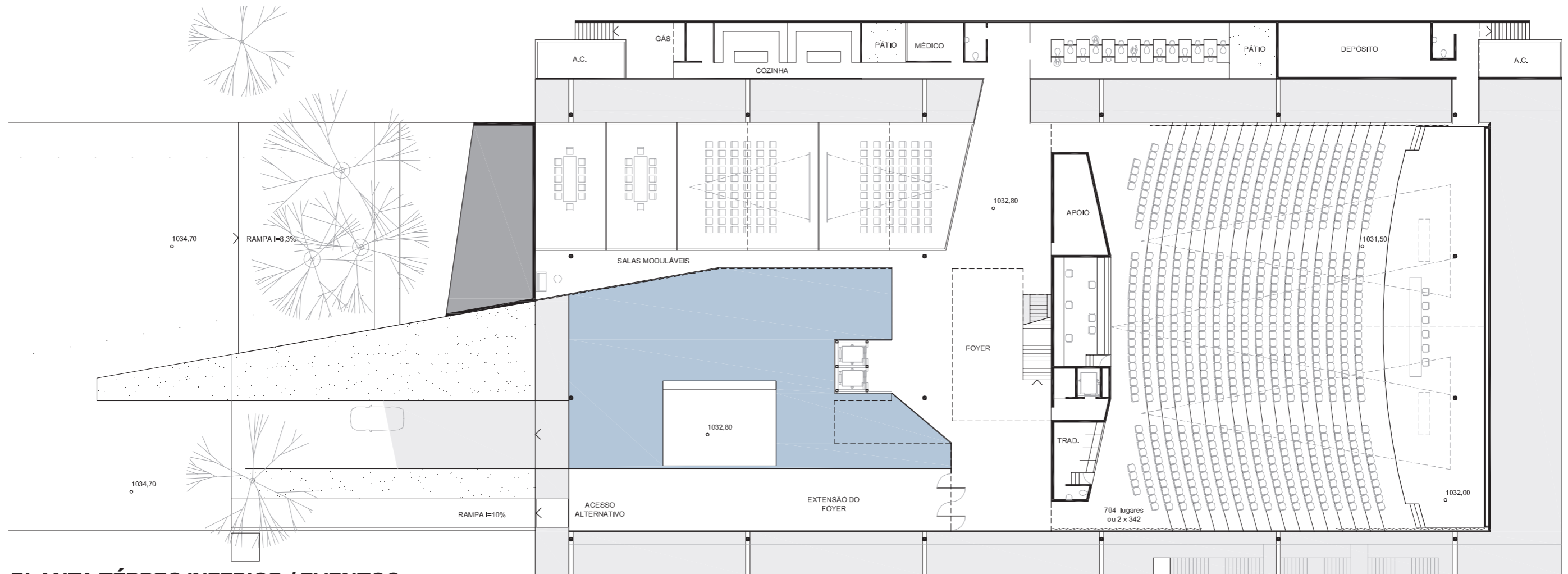




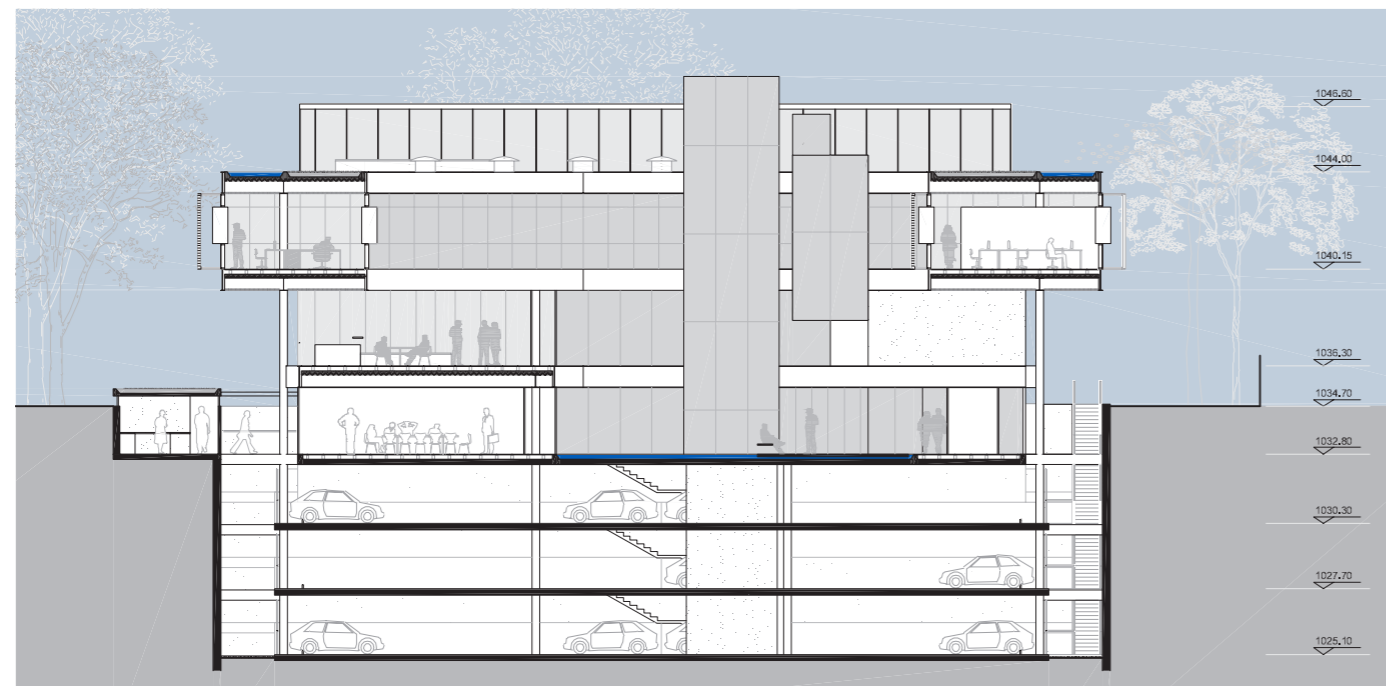
PLANTA TÉRREO SUPERIOR / ACESSO GERAL - 1036.30
 ESCALA 1/300



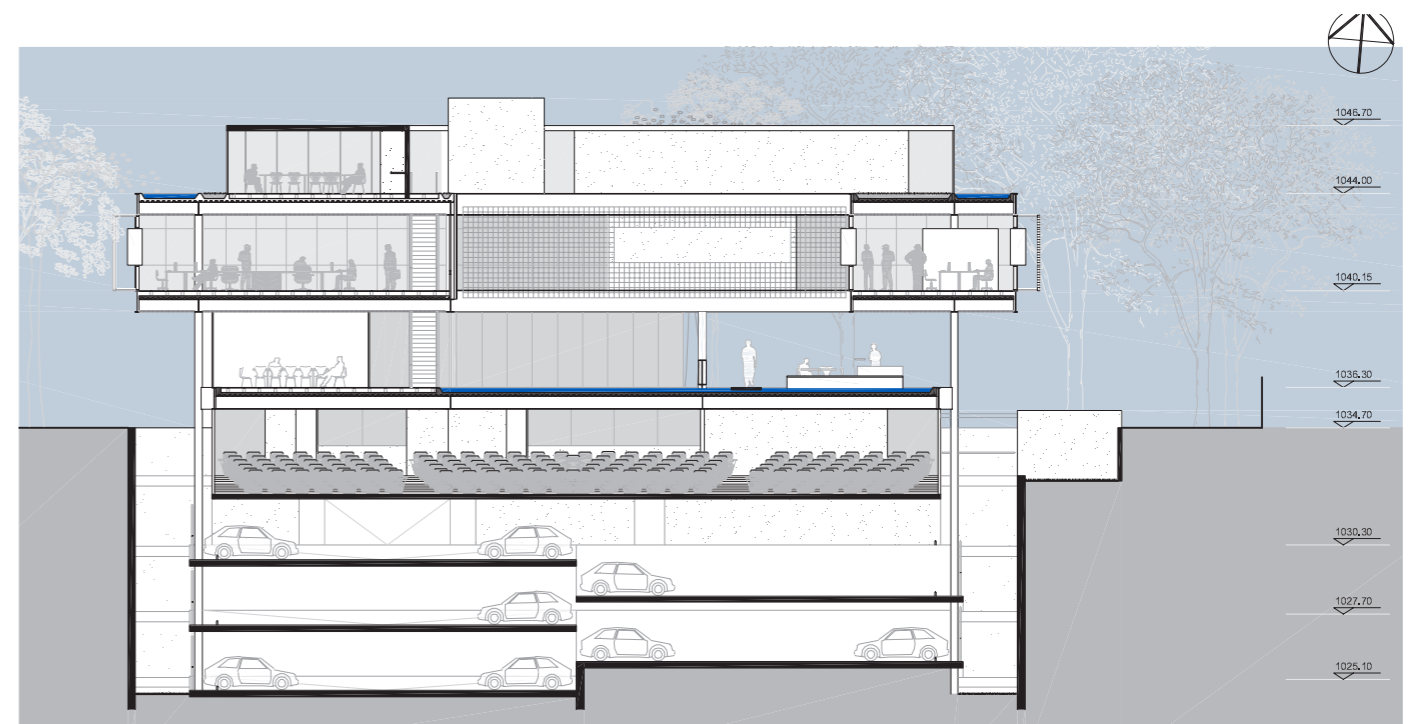
CORTE LONGITUDINAL
 ESCALA 1/300



PLANTA TÉRREO INFERIOR / EVENTOS - 1032.80
 ESCALA 1/300



CORTE TRANSVERSAL - PÁTIO FOYER
 ESCALA 1/300



CORTE TRANSVERSAL - PÁTIO BIBLIOTECA
 ESCALA 1/300



PLANTA ESCRITÓRIOS - 1040.15

ESCALA 1/300

- | | | |
|------------------------------|----------------------------------|-----------------------------|
| 1. PRESIDÊNCIA | 6.1. DIRETORIA | 8.1 DIRETORIA |
| 2. ASSESSORIA INTERNACIONAL | 6.2. ESTUDOS TÉCNICOS / PROJETOS | 9. REPRESENTAÇÕES ESTADUAIS |
| 3. ASSESSORIA DE COMUNICAÇÃO | 7. GOVERNANÇA ELETRÔNICA | 10. DEPÓSITO |
| 4. ASSESSORIA PARLAMENTAR | 7.1. COORDENAÇÃO | 11. REPROGRAFIA |
| 5. ÁREA ADM. FINANCEIRA | 7.2. PORTAL MUNICIPAL | 12. VARANDA SANITÁRIOS |
| 5.1 DIRETORIA | 7.3. PORTAL CIDADE COMPRAS | 13. ELEVADORES SOCIAIS |
| 5.2 CENTRAL DE ATENDIMENTO | 7.4. SIAMWEB | 14. ELEVADOR DE SERVIÇOS |
| 6. ÁREA TÉCNICA | 8. ÁREA JURÍDICA | |